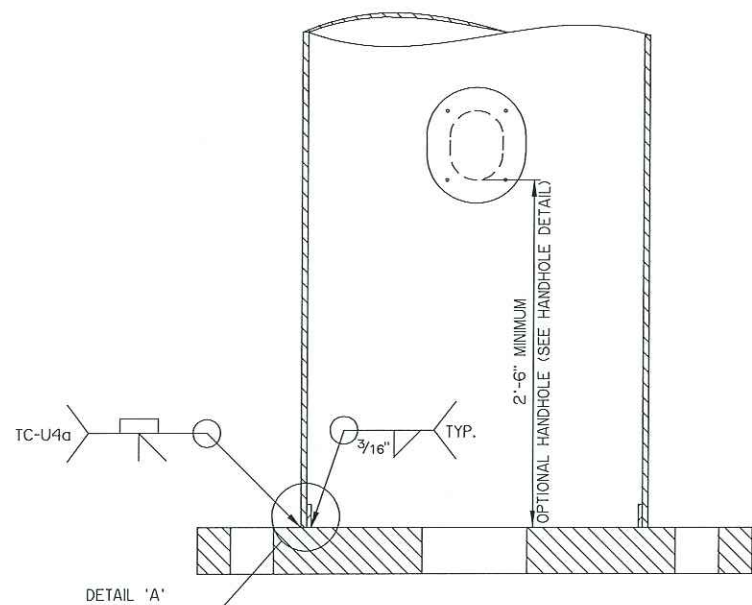
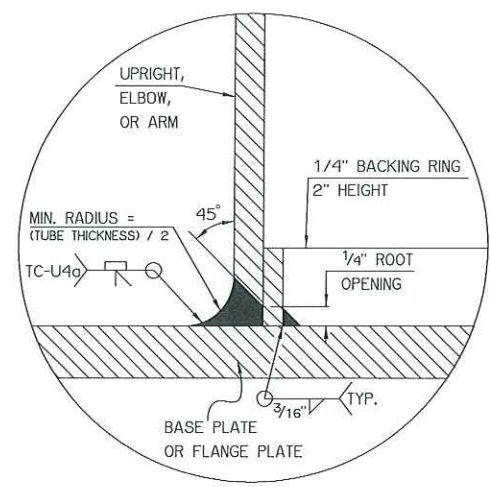


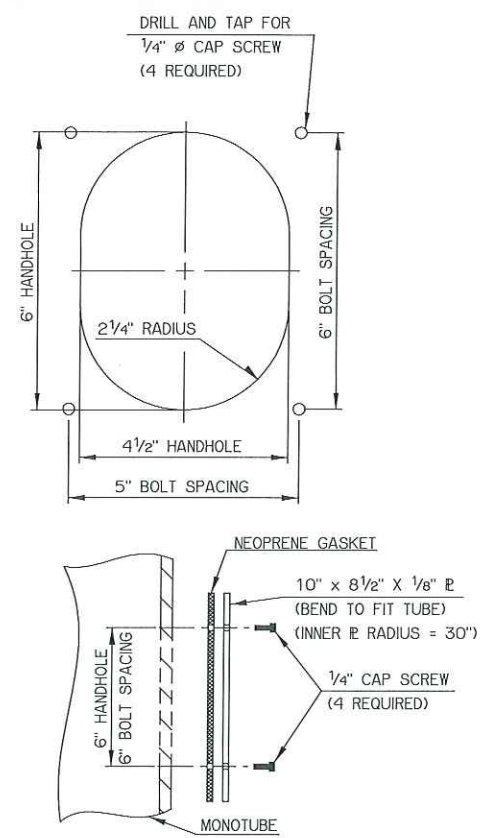
REV. NO.	DESCRIPTION	REVISIONS	DATE



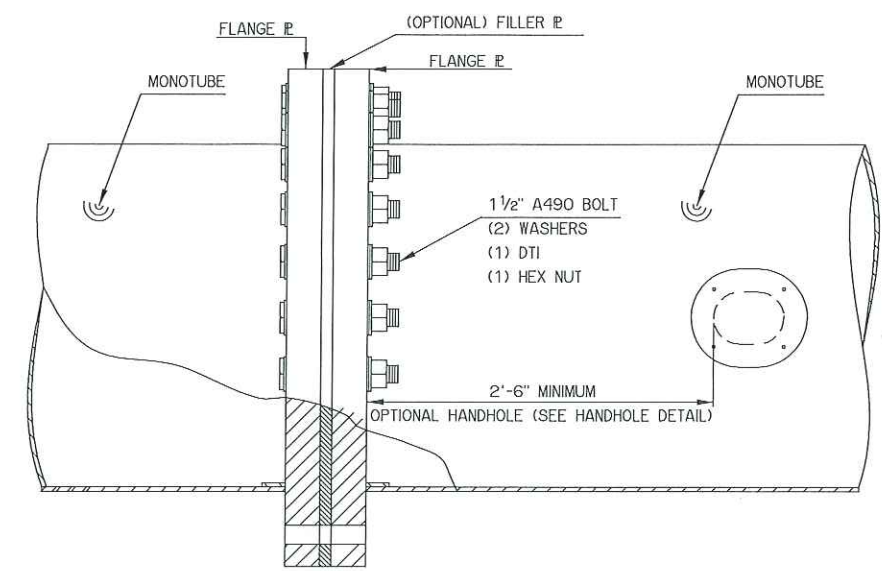
TUBE-TO-TRANSVERSE-PLATE DETAIL (TYPICAL)
(DETAIL TYPICAL FOR BASE AND FLANGE PLATES)



DETAIL 'A'



HANDHOLE DETAIL
(OPTIONAL)



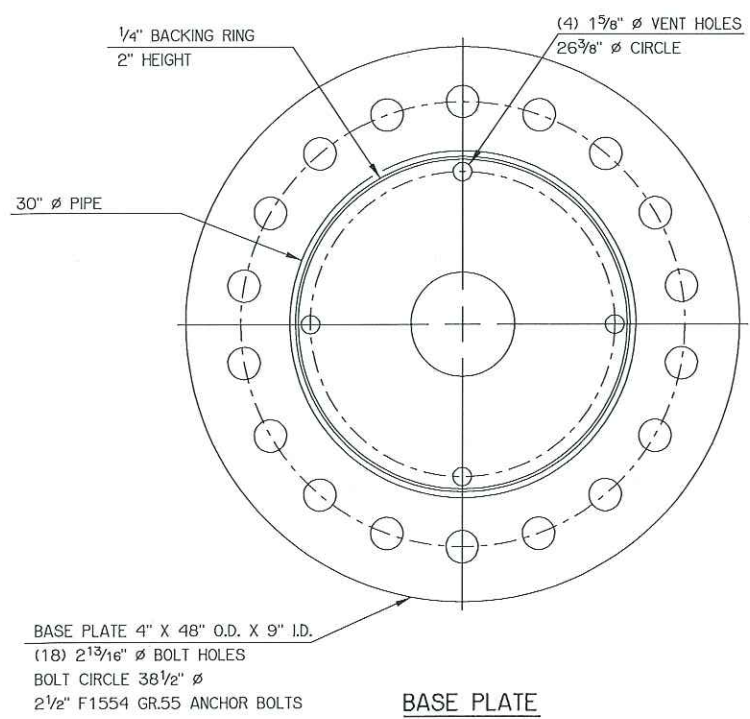
TYPICAL FLANGE CONNECTION DETAIL

NOTE: OPTIONAL HANDHOLES FOR TYPE 'B' STRUCTURES SHOULD BE POSITIONED ON THE ROADWAY FACE OF THE TUBE.

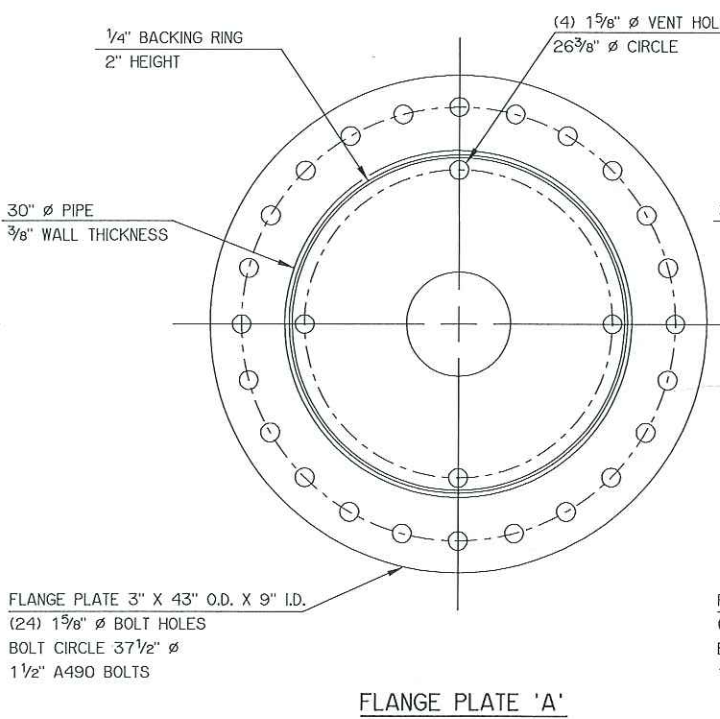
OPTIONAL FILLER PLATE NOTE:

DURING ASSEMBLY OF THE FLANGE CONNECTIONS, THE TWO ADJOINING MEMBERS SHALL NOT BE PULLED TOGETHER AND TIGHTENED IF A GAP OF OVER 1/8" EXISTS. IF A GAP EXCEEDING THIS TOLERANCE IS ENCOUNTERED, THE CONTRACTOR IS PERMITTED TO USE A FILLER PLATE AT A HORIZONTAL MEMBER FLANGE CONNECTION. THE MAXIMUM THICKNESS OF A FILLER PLATE AT ANY SINGLE FLANGE CONNECTION IS 1". IF MORE THAN 1", BUT LESS THAN OR EQUAL TO 6", IS REQUIRED FOR ASSEMBLY THE REQUIRED DIMENSION SHALL BE SEPERATED INTO TWO DIFFERENT FLANGE CONNCTIONS AND THE TWO FLANGE CONNECTIONS SHALL BE LOCATED SYMMETRICALLY ALONG THE TYPE B MONOTUBE STRUCTURE. ADDITION OF FILLER PLATES SHALL BE AT THE COST OF THE CONTRACTOR.

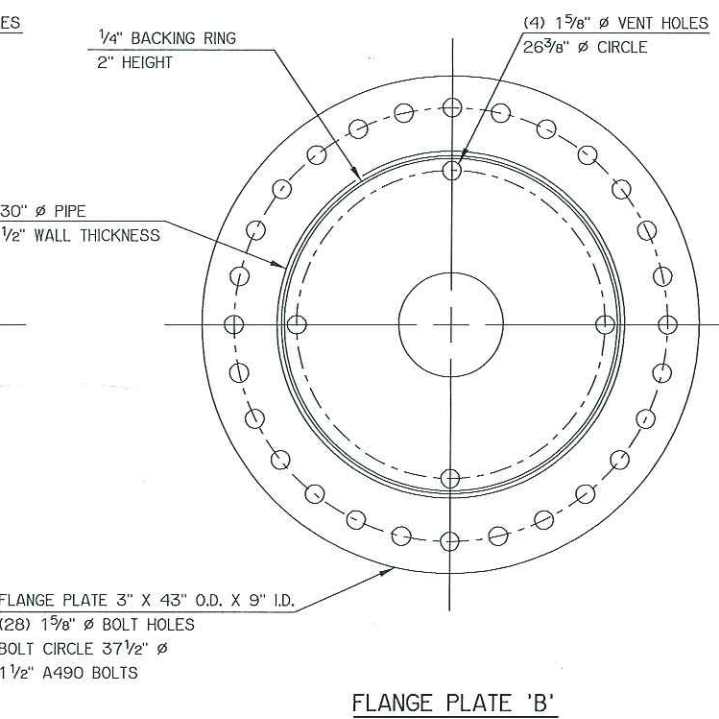
MONOTUBE SCHEDULE				
SPAN	TUBE DIAMETER (ALL TUBES)	TUBE THICKNESS (ALL TUBES)	BASE \mathbb{R}	FLANGE \mathbb{R}
70FT - 90FT	30"	3/8"	TYPICAL	A
95FT - 150FT	30"	1/2"	TYPICAL	B



BASE PLATE



FLANGE PLATE 'A'



FLANGE PLATE 'B'

MONOTUBE STRUCTURE (TYPE 'B' DETAIL)

Design	JG	JW
Detail	JG	JW
Check	JG	JW
Squad Eng.	SUPERVISOR ENGINEER	

STATE OF OKLAHOMA DEPARTMENT OF TRANSPORTATION
JOB PIECE NO. 30444(06) SHEET NO. M2